



MOBILE CONTAINER SALES



Portable Storage Manufacturer & Supplier



SPCIFICATIONS

- ❖ 7'-3-1/2" wide X 7-10" high X 8'-1-1/2" long
- ❖ Empty weight: 1,100 lbs.
- ❖ Forklift tubes 6" x 3" - 33" OC
- ❖ Integrated receivers for wheels
- ❖ Integrated tubes for D-Rings
- ❖ Composite wall panels
- ❖ Recessed threshold
- ❖ 3/4" flooring over 20" on center I beams
- ❖ One piece sealed and riveted aluminum roof
- ❖ Full width roll up door or swing doors optional
- ❖ Stackable 3 high fully loaded
- ❖ Payload capacity @7,500 lbs.
- ❖ Galvanized steel frames

OPTIONS

- ❖ Galvanized Steel Finish \$3,425
- ❖ Roll Door No extra charge
- ❖ Wheel Inserts No extra charge
- ❖ Customize with your Company Logo (2) 4' X 6' decals add \$245 per unit

PRICING

- ❖ 42 of our 8 ft. containers can ship on one flatbed semi



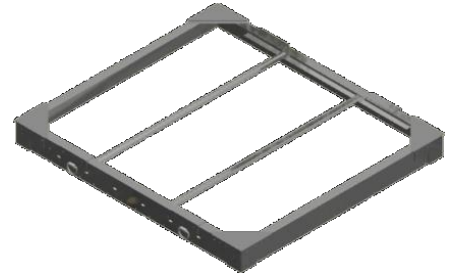
MOBILE CONTAINER SALES



Portable Storage Manufacturer & Supplier

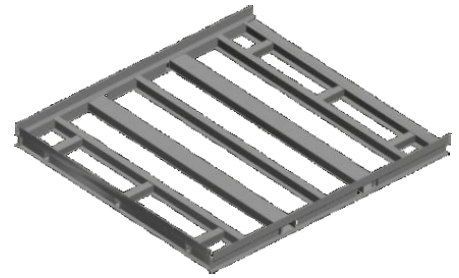
Roof Structure

- 4 Custom formed angles *7-1/2" X 3" *10 gauge
- 2 Tie down angles
- 4 Custom corner roof gussets
- 2 Roof bows @ 24" centers
- 4 Forged d-rings
- Pre-punched perimeter alignment holes for wall panels



Floor Structure

- 3 Custom formed base rails * 10 gauge
- 2 Custom formed C-Channel * 10 gauge
- 4 I Beams * 2-1/4" X 4" X 1/8"
- 2 lifting tubes * 6" X 3" X 1/8"
- 4 (wheel) receiver tubes * 2-1/2" X 2-1/2" X 3/16"
- 2 D- Rings tubes * 2-1/2" X 2-1/2" X 3/16
- Pre-punched perimeter alignment holes for wall panels



Wall Section

- Custom formed corner posts *10 gauge
- Pre-punched alignment holes to attach to base & wall panels
- Composite Wall Panels**
- Panels are composed of two, coil-coated metal skins laminated between a low-density, polyethylene core
- Lightweight. Durable. Flexible

